

SILKNOV

ADASilk

Graphical Instructions for the evaluations

What is ADASilk

ADASilk (Advanced Data Analysis for Silk heritage), which integrates an exploratory search engine and a spatio-temporal map, is built on top of the SILKNOW's knowledge graph that contains nearly 40,000 fabric entries with images and other relevant information describing them (e.g., production place, production timespan, material, technique, etc.).

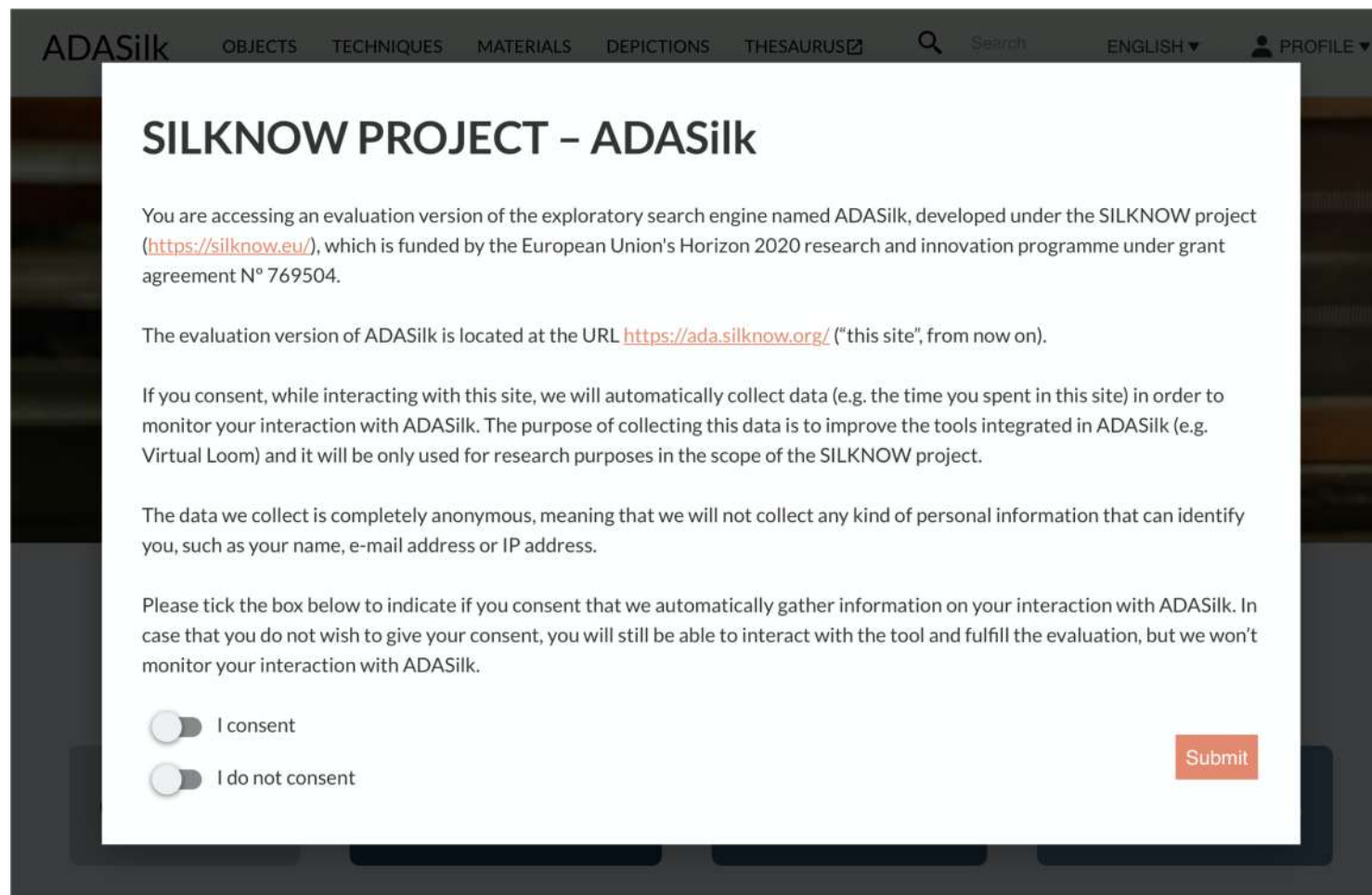
This information is enriched by text analytics, that automatically extracts data from the textual description of silk fabrics.

Accessing ADASilk

Click on
<https://ada.silknow.org/en>
for accessing ADASilk web
application



Select your choice and go
ahead

A screenshot of the ADASilk website. The header is dark with the ADASilk logo and navigation links: OBJECTS, TECHNIQUES, MATERIALS, DEPICTIONS, THESAURUS, a search icon, Search, ENGLISH, and a user profile icon. The main content area is white and titled "SILKNOW PROJECT – ADASilk". It contains a welcome message, a paragraph about the evaluation version, a paragraph about data collection, a paragraph about data anonymity, and a consent section with two radio buttons and a "Submit" button.

ADASilk OBJECTS TECHNIQUES MATERIALS DEPICTIONS THESAURUS Search ENGLISH PROFILE

SILKNOW PROJECT – ADASilk

You are accessing an evaluation version of the exploratory search engine named ADASilk, developed under the SILKNOW project (<https://silknow.eu/>), which is funded by the European Union's Horizon 2020 research and innovation programme under grant agreement N° 769504.

The evaluation version of ADASilk is located at the URL <https://ada.silknow.org/> ("this site", from now on).

If you consent, while interacting with this site, we will automatically collect data (e.g. the time you spent in this site) in order to monitor your interaction with ADASilk. The purpose of collecting this data is to improve the tools integrated in ADASilk (e.g. Virtual Loom) and it will be only used for research purposes in the scope of the SILKNOW project.

The data we collect is completely anonymous, meaning that we will not collect any kind of personal information that can identify you, such as your name, e-mail address or IP address.

Please tick the box below to indicate if you consent that we automatically gather information on your interaction with ADASilk. In case that you do not wish to give your consent, you will still be able to interact with the tool and fulfill the evaluation, but we won't monitor your interaction with ADASilk.

☐ I consent

☐ I do not consent

Submit

ADASilk main page

Change the language

Textual query with
autocompletion

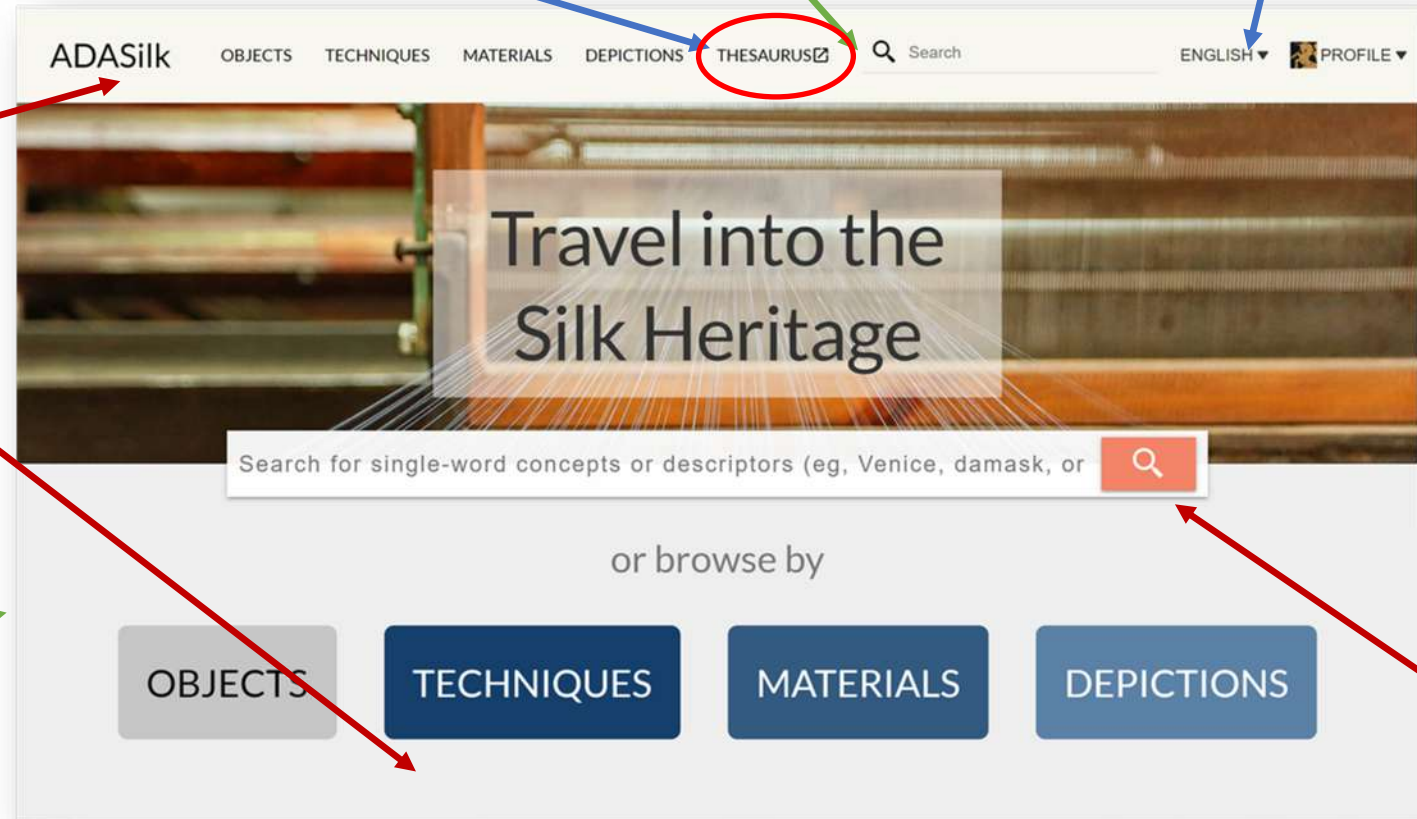
Multilingual Thesaurus

Search by
Object
Techniques
Materials
Depictions

Sign in

Main search bar

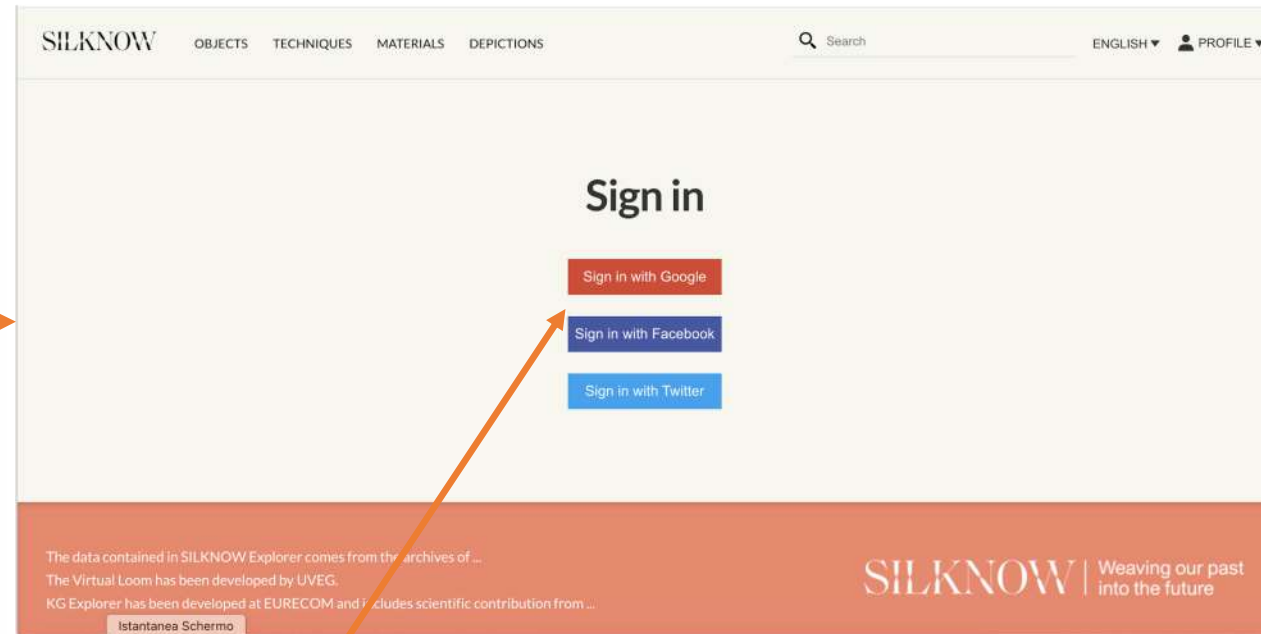
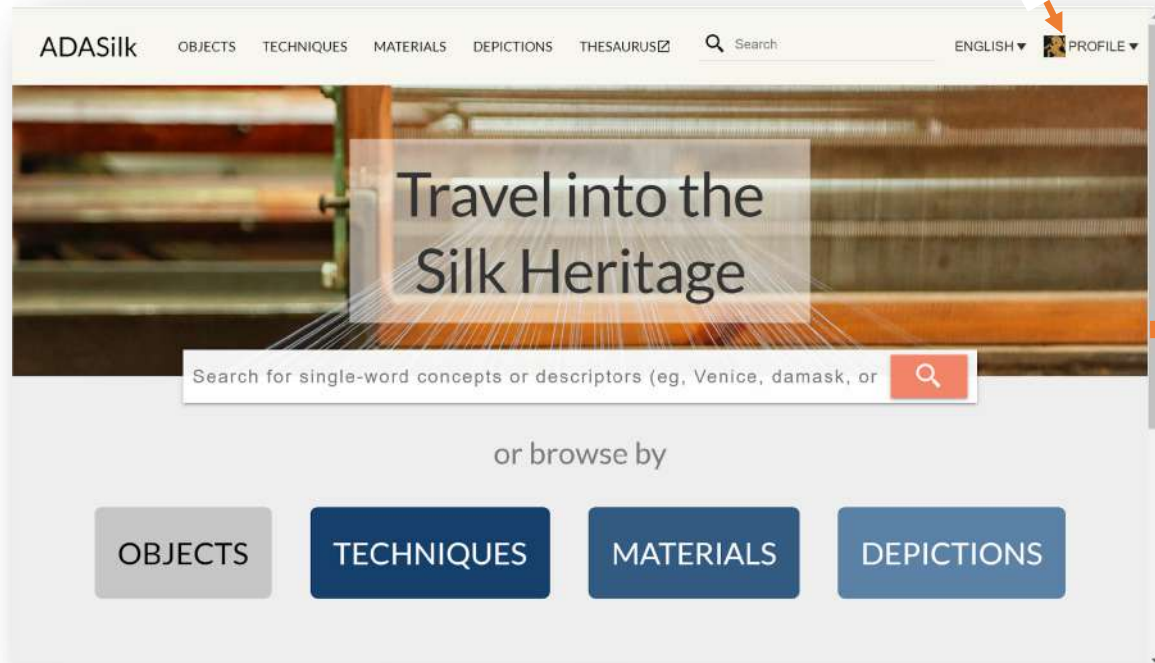
Search by
image by
dragging and
dropping files



ADASilk main page

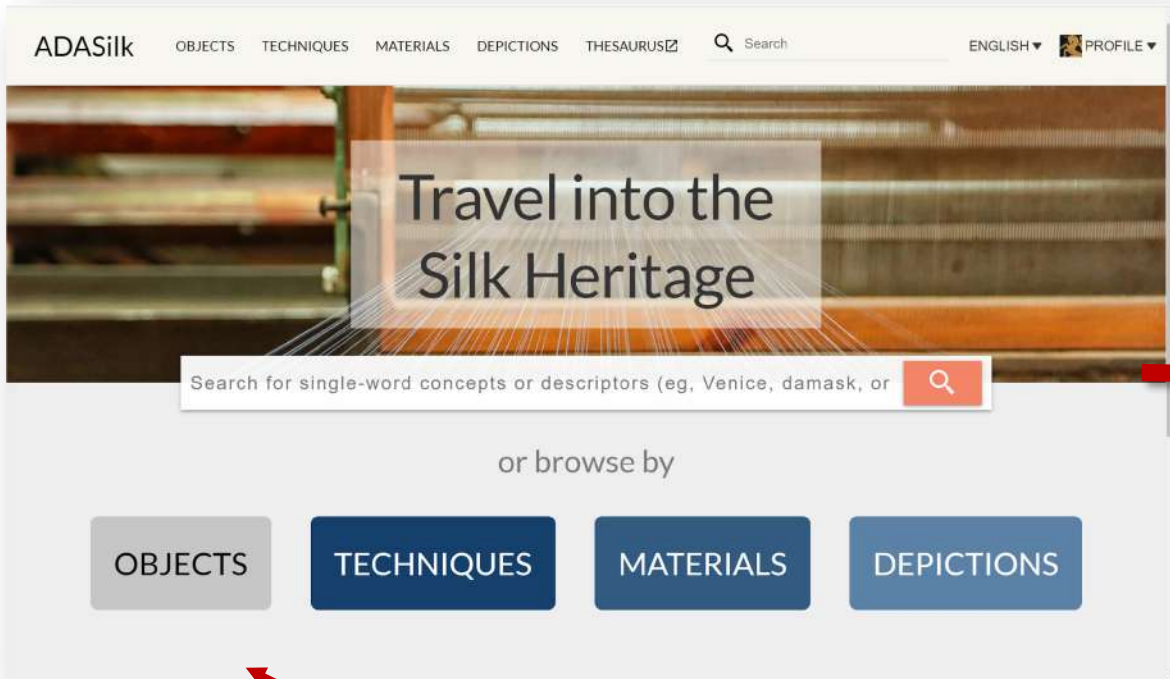
Sign in

Click

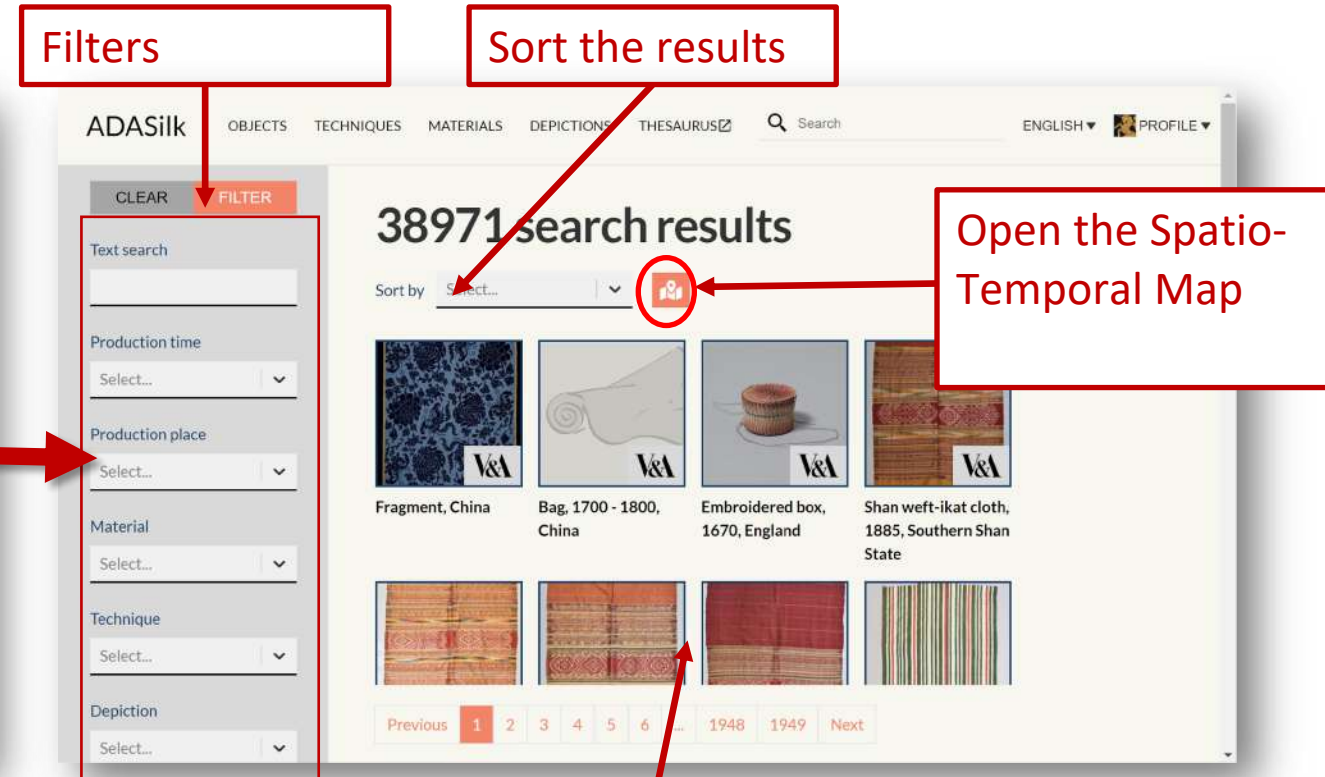


Select the sign-in method

ADASilk Selecting Object



Click to search all the Objects



All the results

ADASilk Selecting Techniques

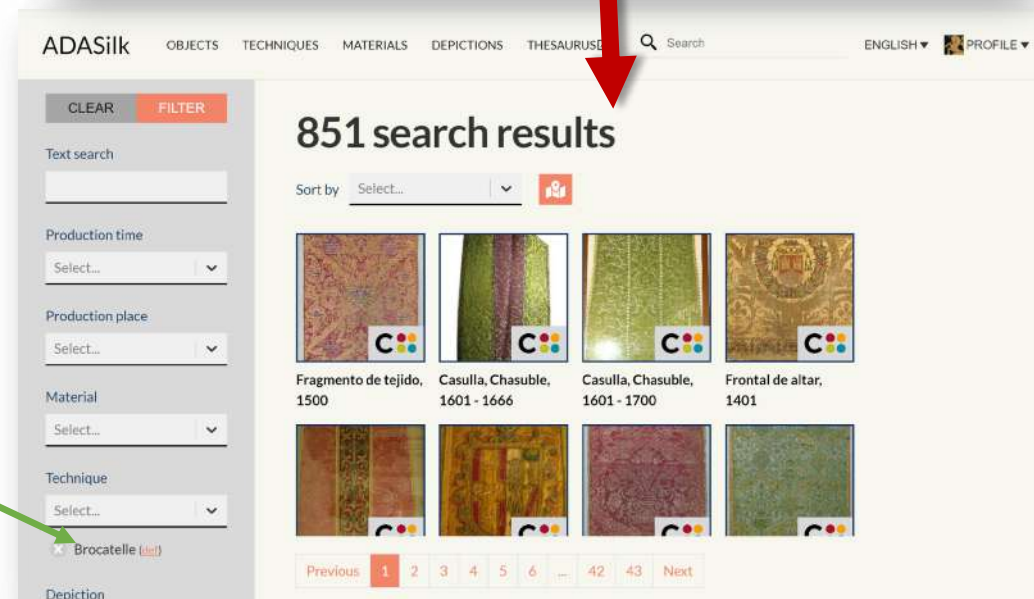
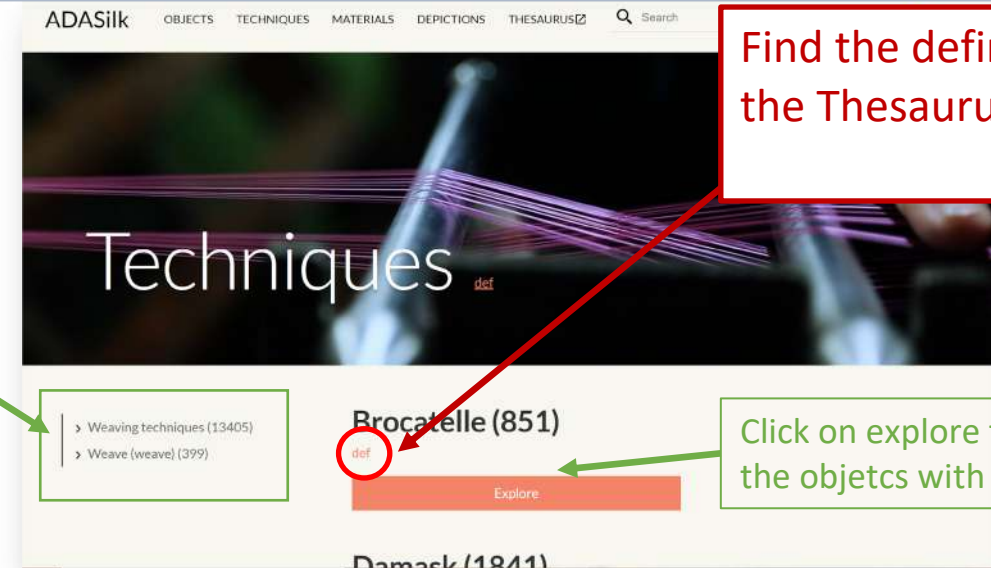
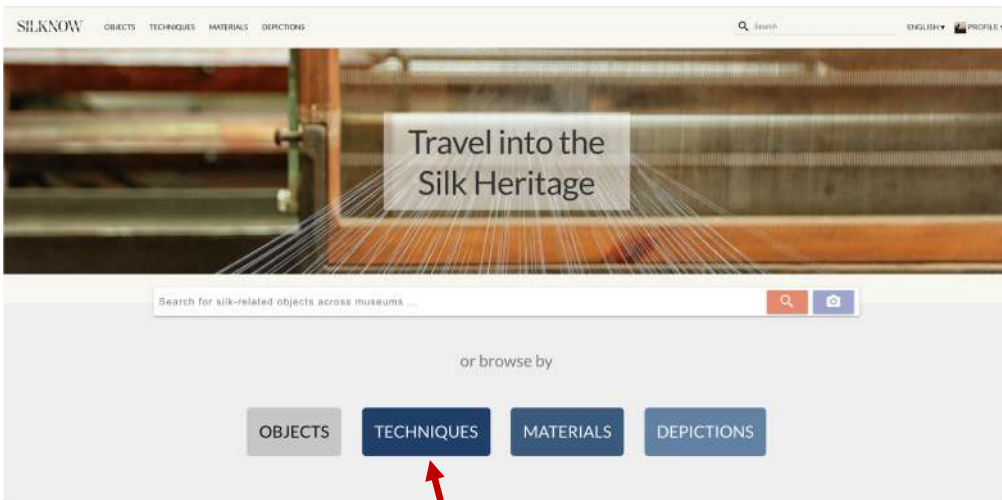
List of Techniques

Find the definition in the Thesaurus

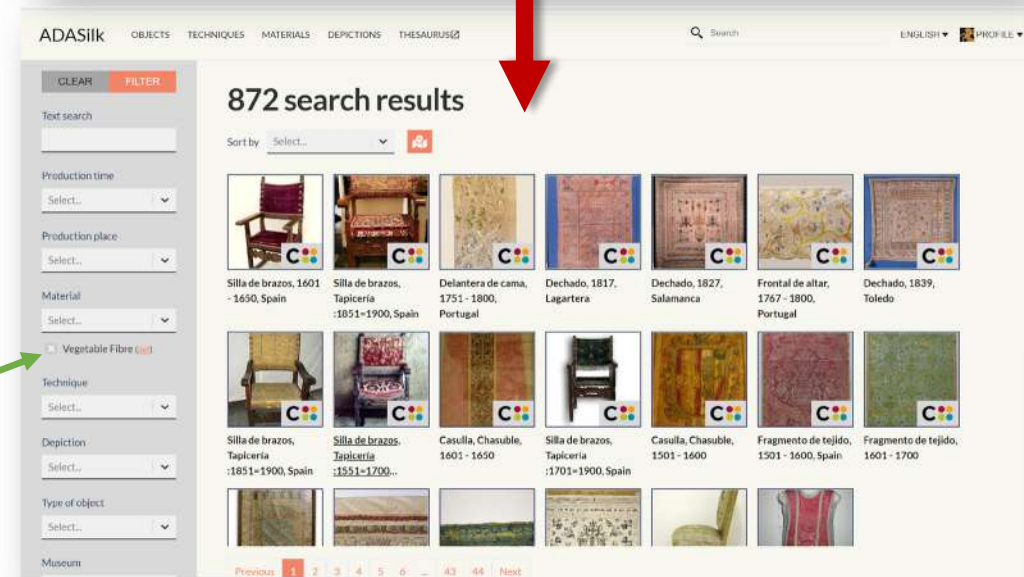
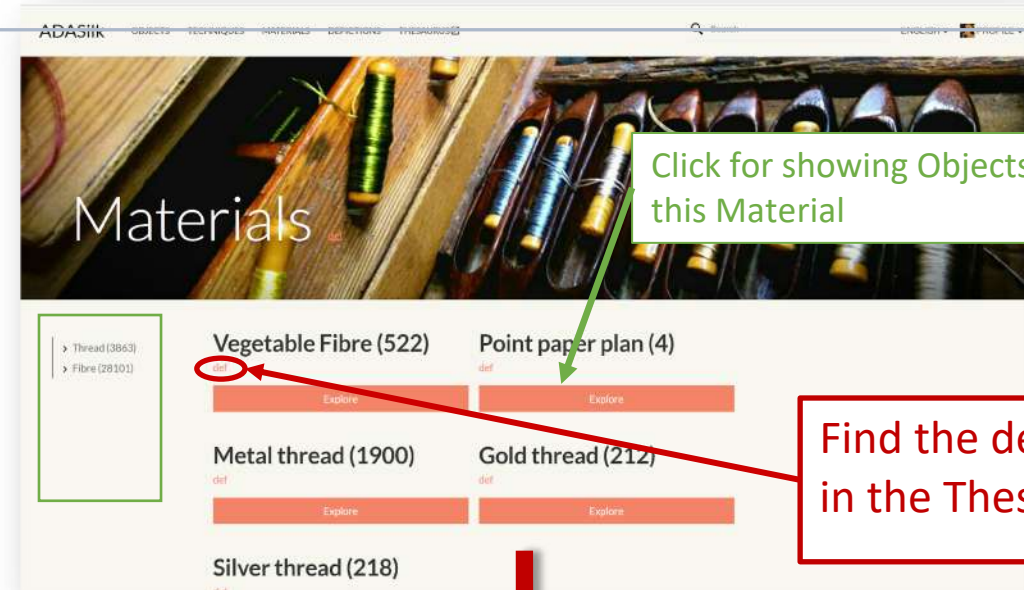
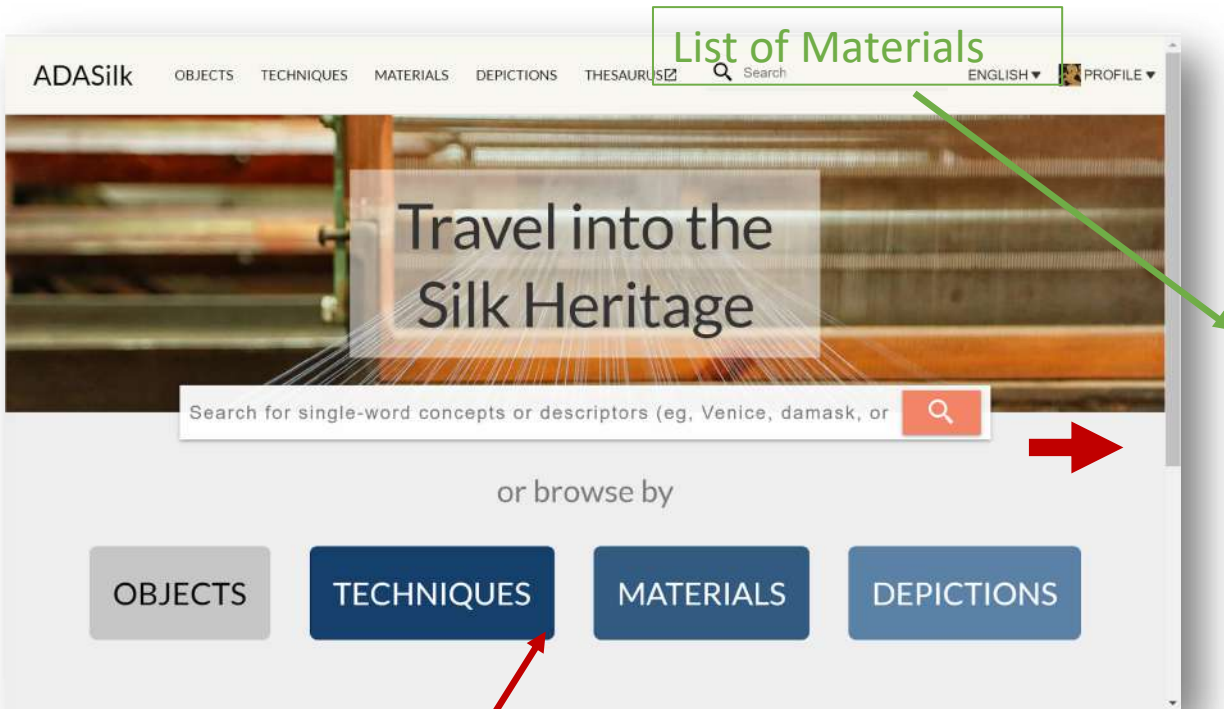
Click on explore for showing all the objects with that technique

Click for searching Techniques

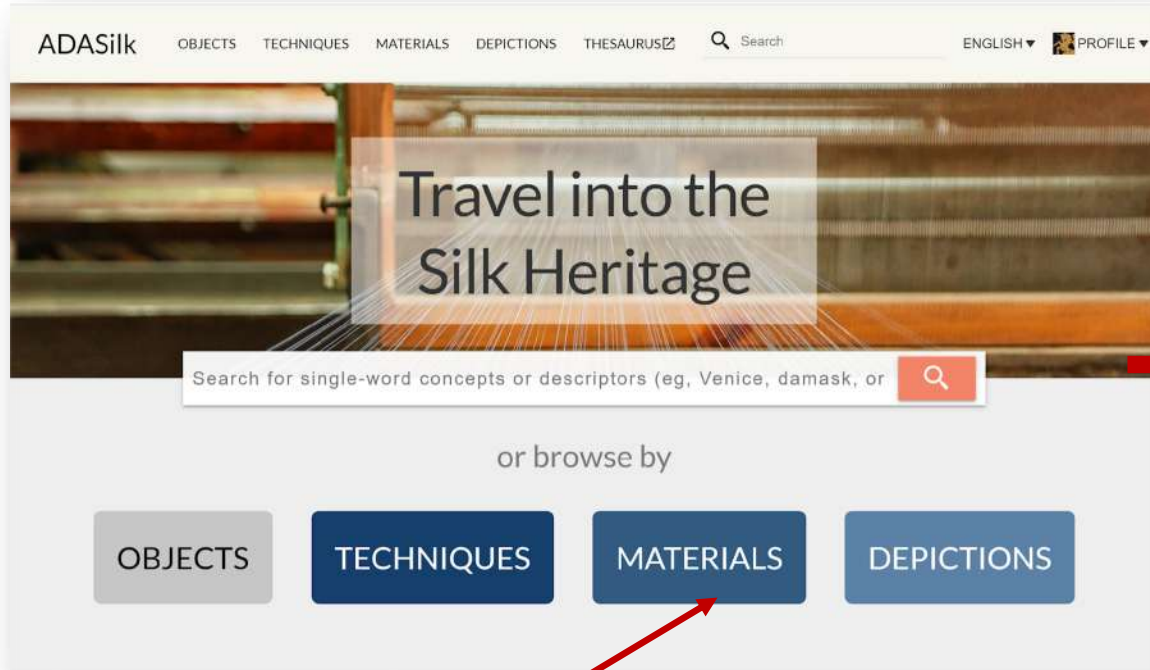
The applied filter appears



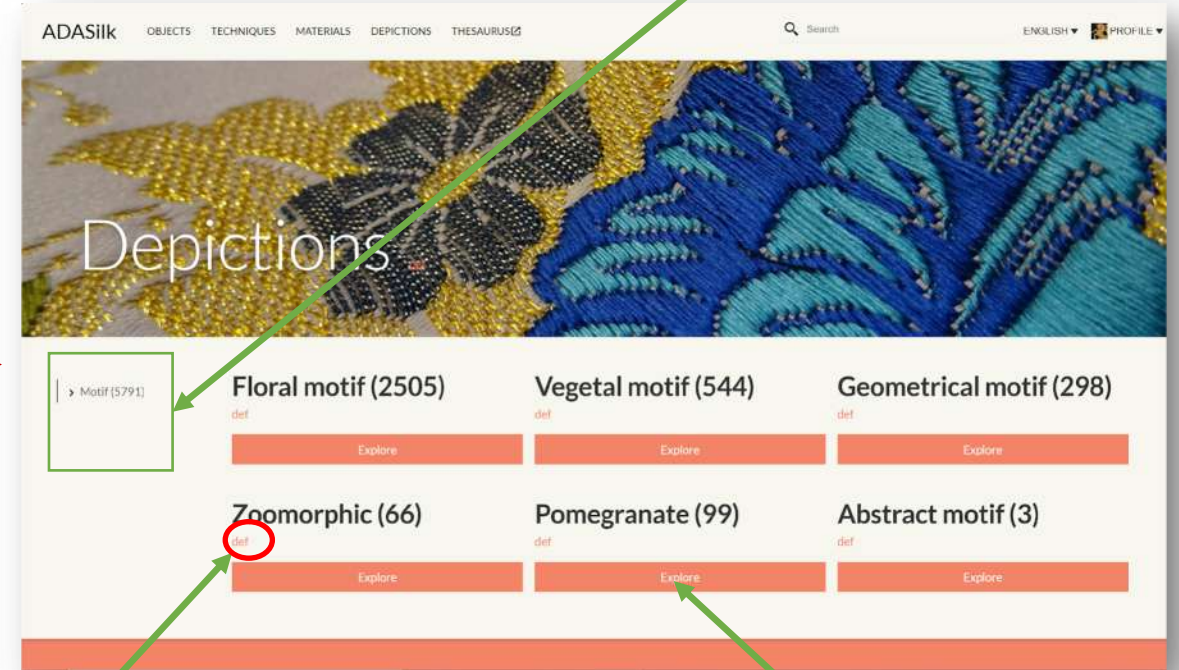
ADASilk Selecting Materials



ADASilk Selecting Depiction



Click for searching Depictions



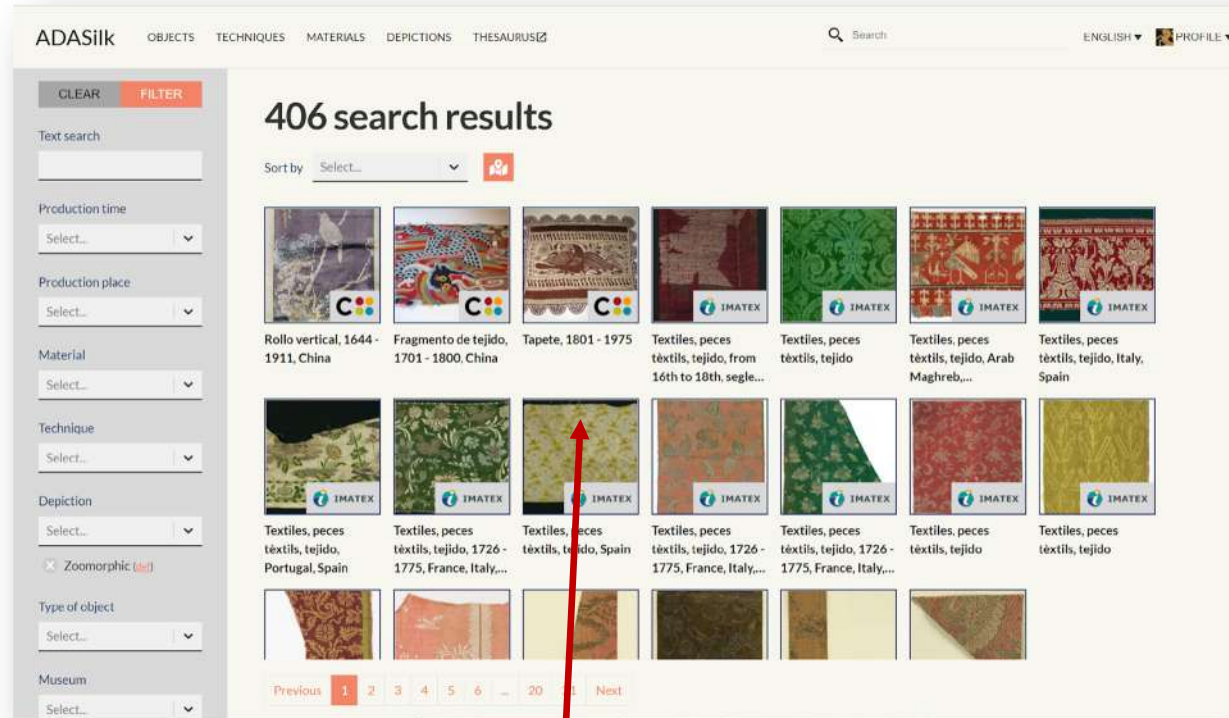
List of Depictions

Link to the definition in the Thesaurus

Click Explore for the description

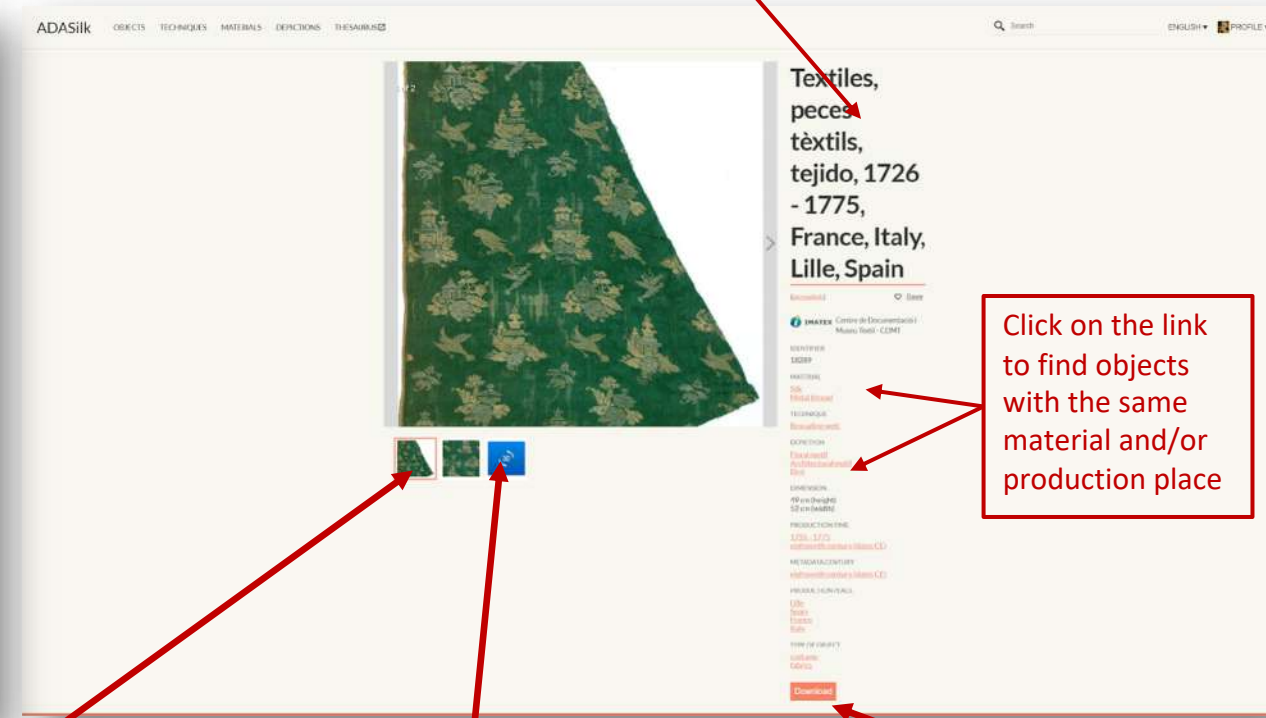
Details on Objects

Information on how the object is stored in the database



Click for selecting an Object

Show one of the two images related to the Objects



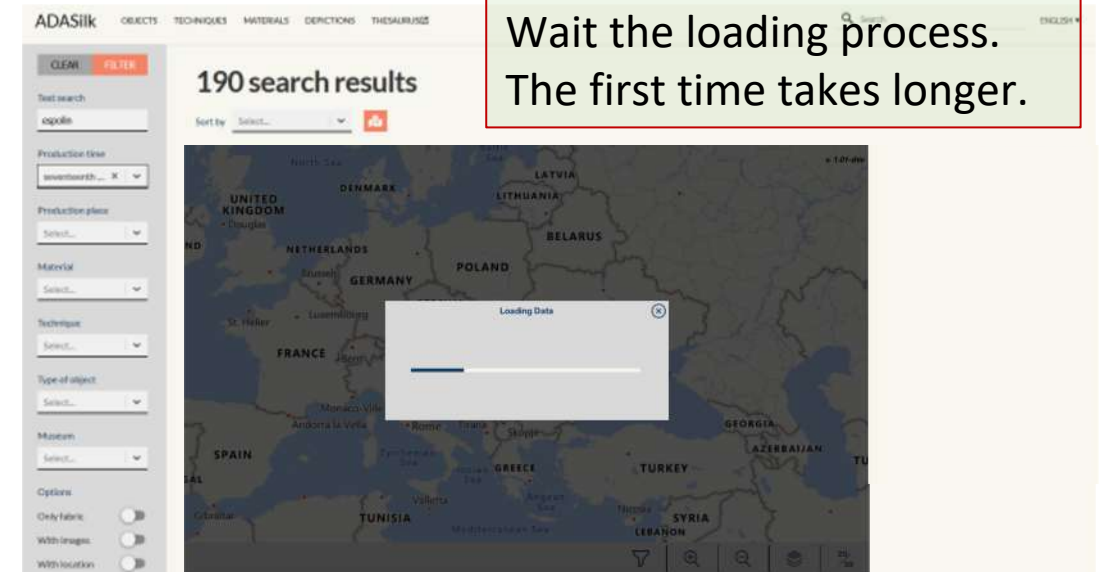
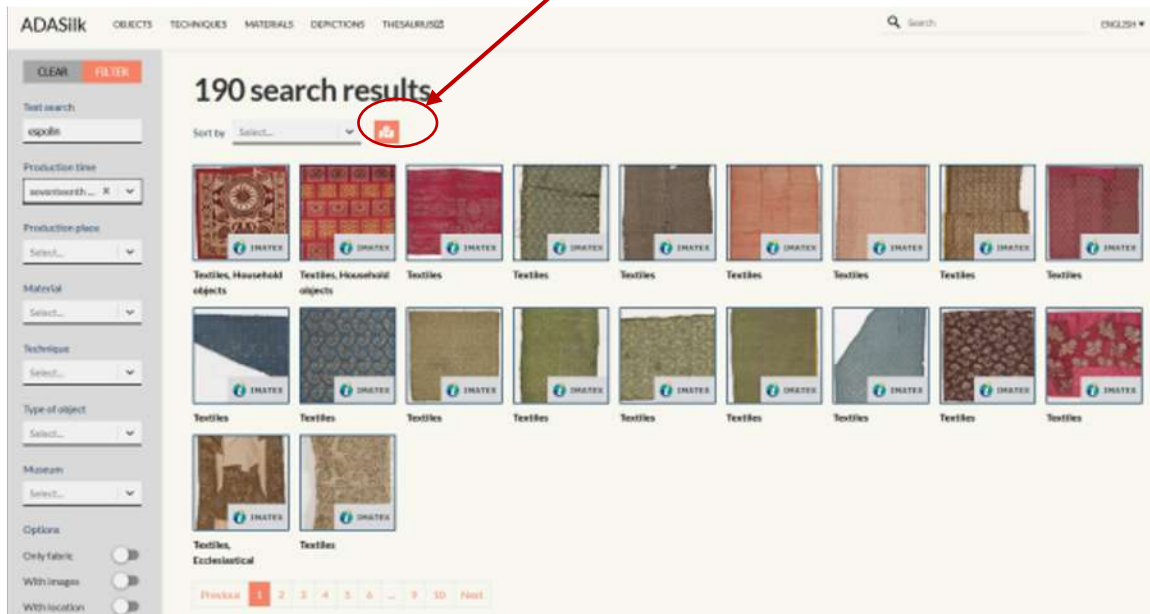
Click on the link to find objects with the same material and/or production place

Activate the Virtual Loom for this Object

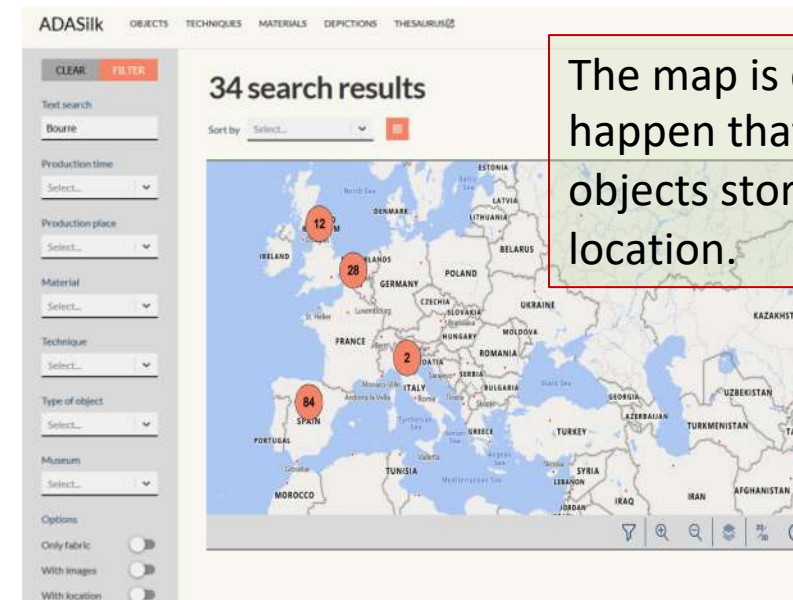
Download the Virtual Loom, this JSON Data and the selected image

ADASilk navigation of the Spatio-Temporal Map

Click for activating the dynamic map and allowing spatial and temporal navigation (Better with datasets lower than 2000 results)



Wait the loading process.
The first time takes longer.

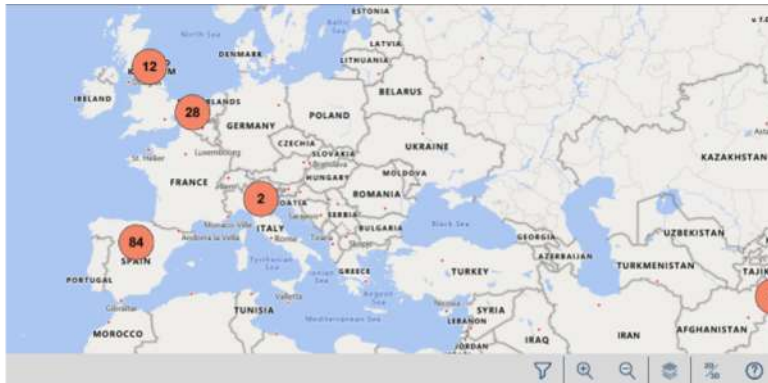
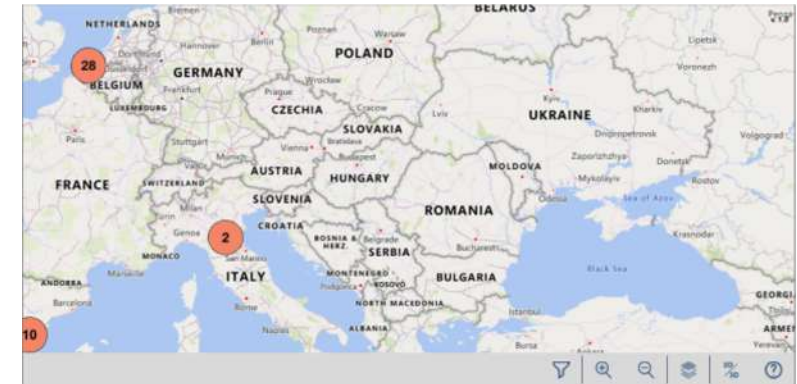


The map is displayed. It may happen that the map shows objects stored with multiple location.

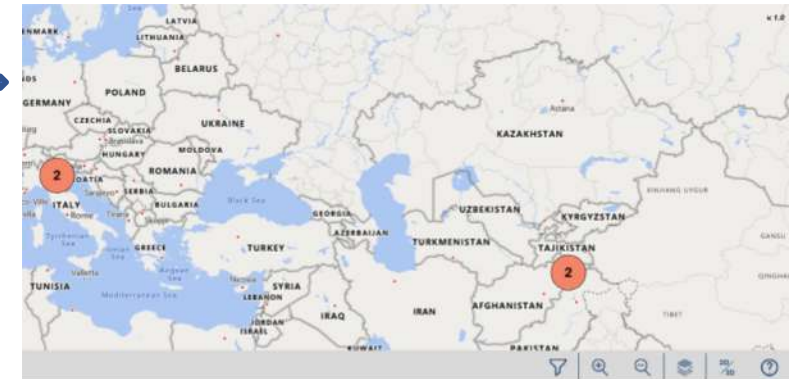
ADASilk navigation of the Spatio-Temporal Map



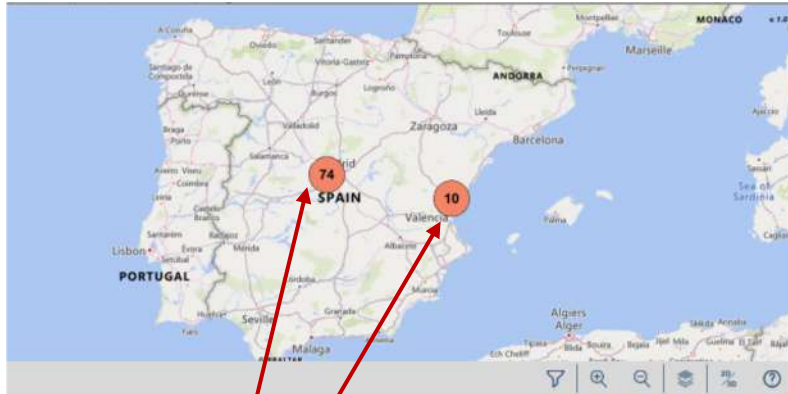
By scrolling the mouse, the map zooms in and out.



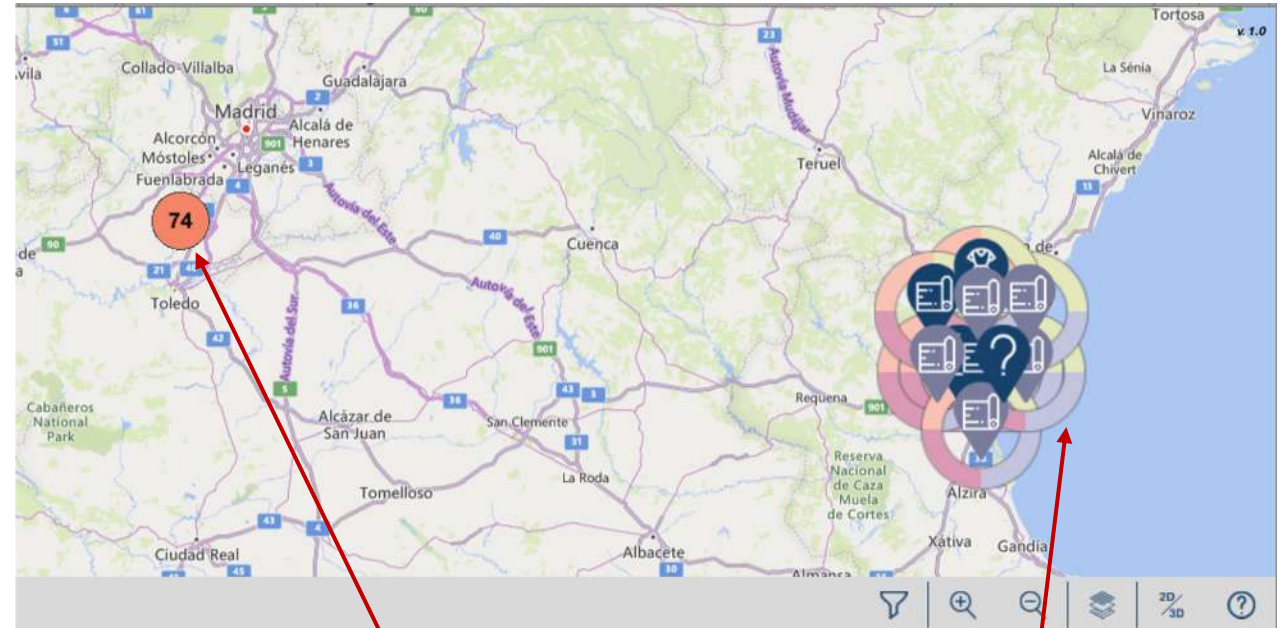
By dragging the mouse, the map moves from left to right, top and down.



ADASilk navigation of the Spatio-Temporal Map

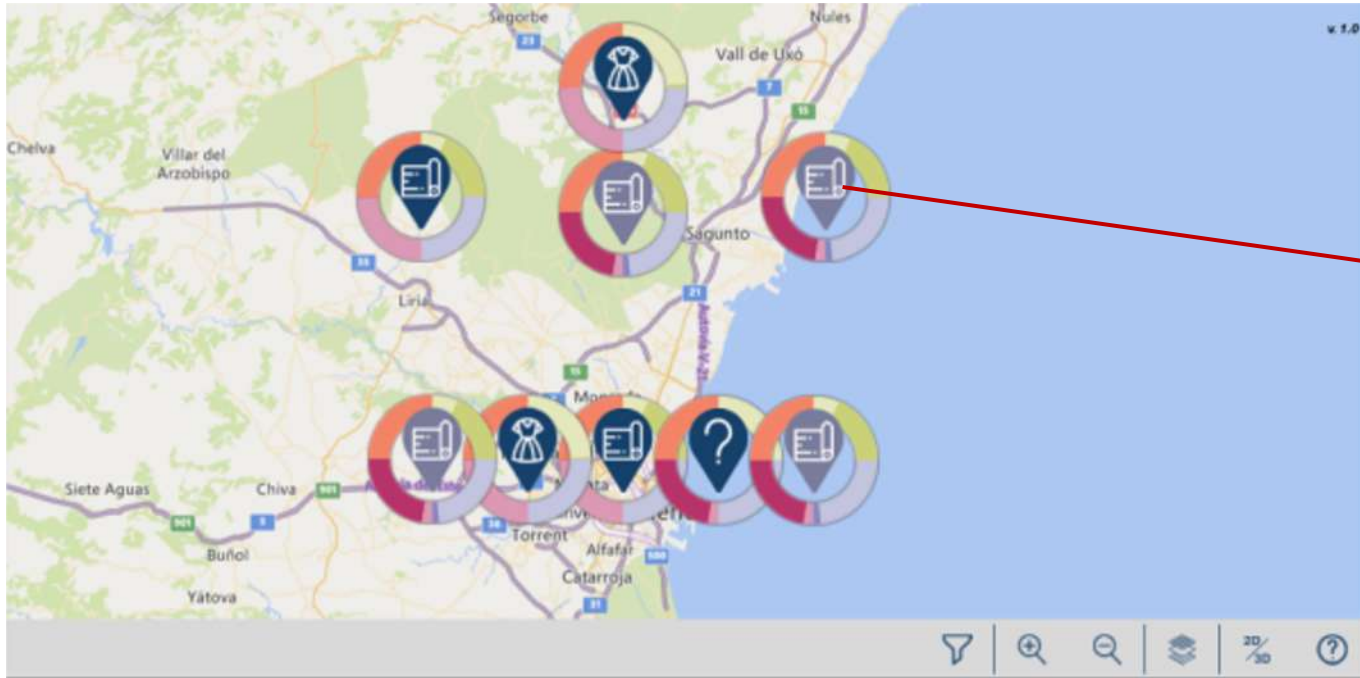


Red circles represent a set of data that are located close



By zooming in, the red circles are changed by the adequate set of points (if the points are located at the same place, the red circle is not changed)

ADASilk navigation of the Spatio-Temporal Map



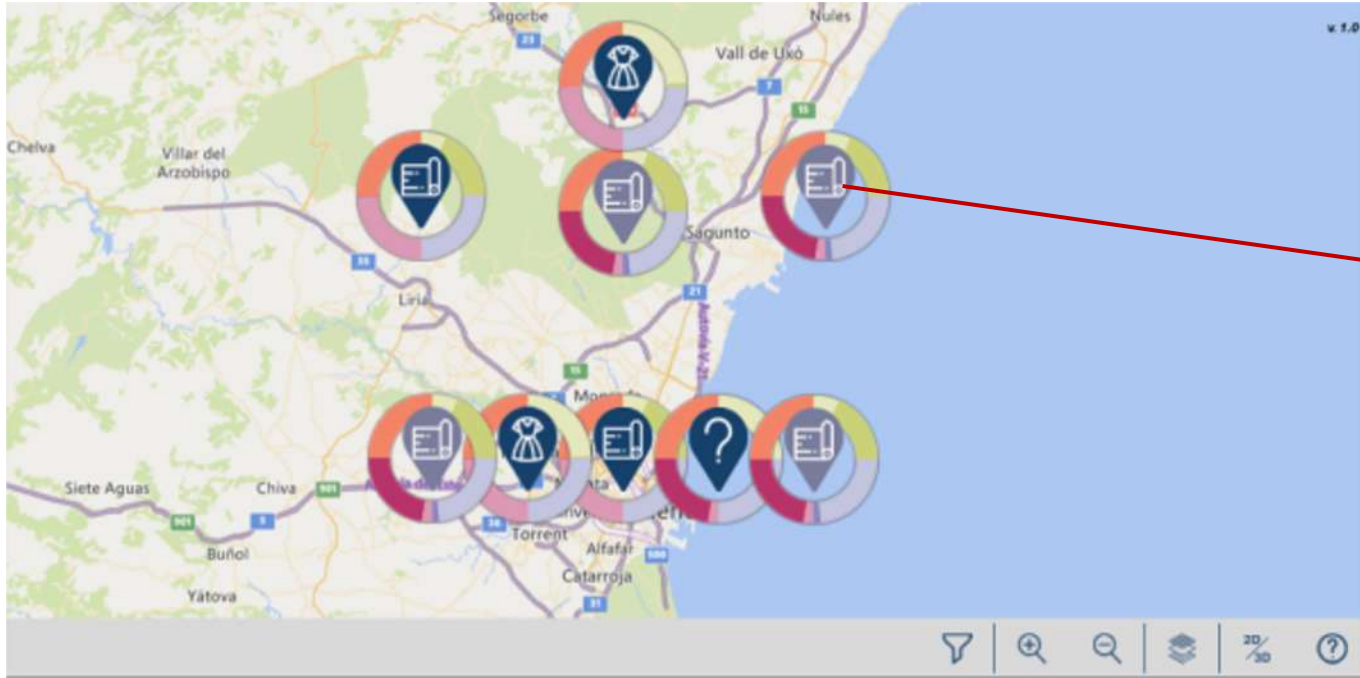
By clicking on the object, it displays a little window where it is shown the percentage of located objects with the same value of each property.



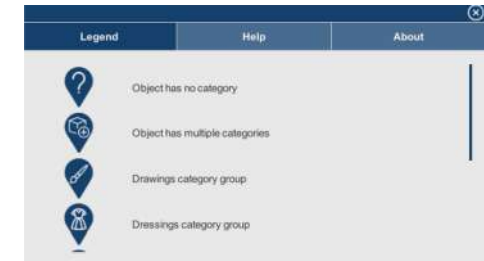
Every object has an icon depending on the type of object and about its uncertainty

Clicking on the help button displays a window with information about the meaning of the icons

ADASilk navigation of the Spatio-Temporal Map



By clicking on the object, it displays a little window where it is shown the percentage of located objects with the same value of each property.



Every object has an icon depending on the type of object and about its uncertainty

Clicking on the help button displays a window with information about the meaning of the icons

ADASilk navigation of the Spatio-Temporal Map



By clicking on the “+” button, it is displayed a window with additional information about the object and pictures.

The detailed view window for object CE05417 is shown over a map background. It includes a description, technical details, and a photograph of the object.

CE05417

Properties:

DESCRIPTION
Edad Moderna, Agemán dorado y platinado. Hecha con brocado de seda y plata de decoración distribuida en la cenefa y otros para las tallas. La seda brocada con pequeños ramos y flores sueltas en colores. En la cenefa iguales motivos pero dispuestos en una guirnalda vertical con pequeñas estrellas de lamina metálica.

TECHNIQUE
Brocade (táctic)

MATERIAL

TIME

PLACE
Valencia

CATEGORY
religious attire

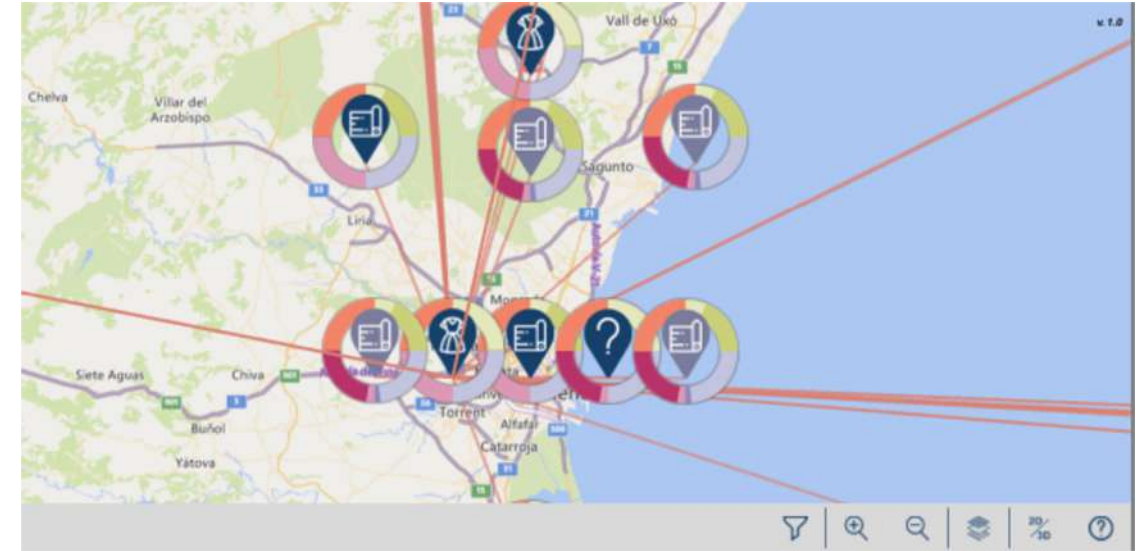
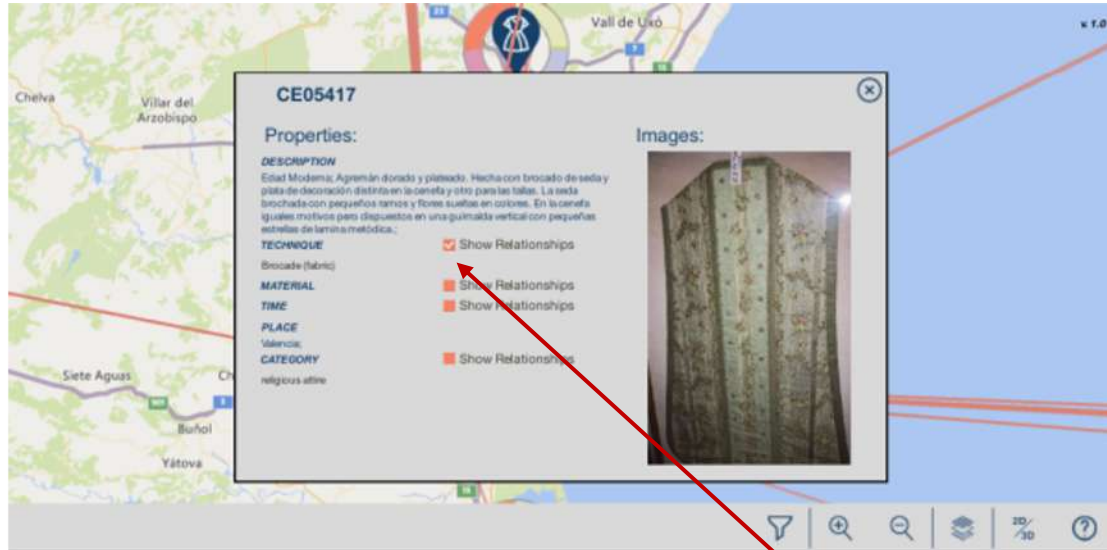
Images:

Each property section has a 'Show Relationships' button.

Map labels: Vall de Uxó, Chelva, Villar del Arzobispo, Sagunto, Siete Aguas, Buñol, Yátova.

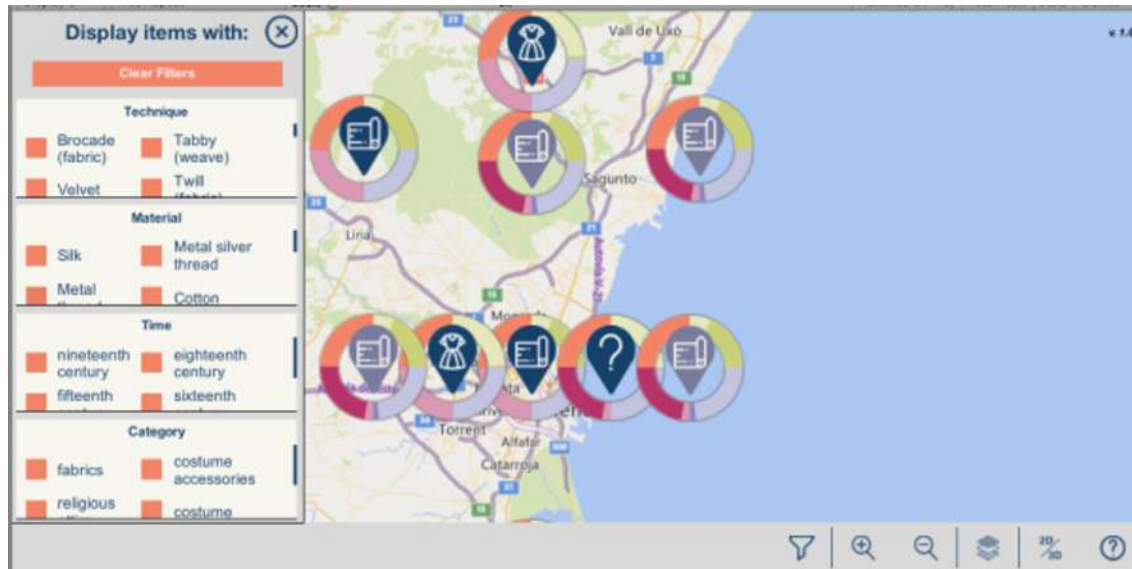
Map scale: 1:0

ADASilk Navigating the Spatio-Temporal Map

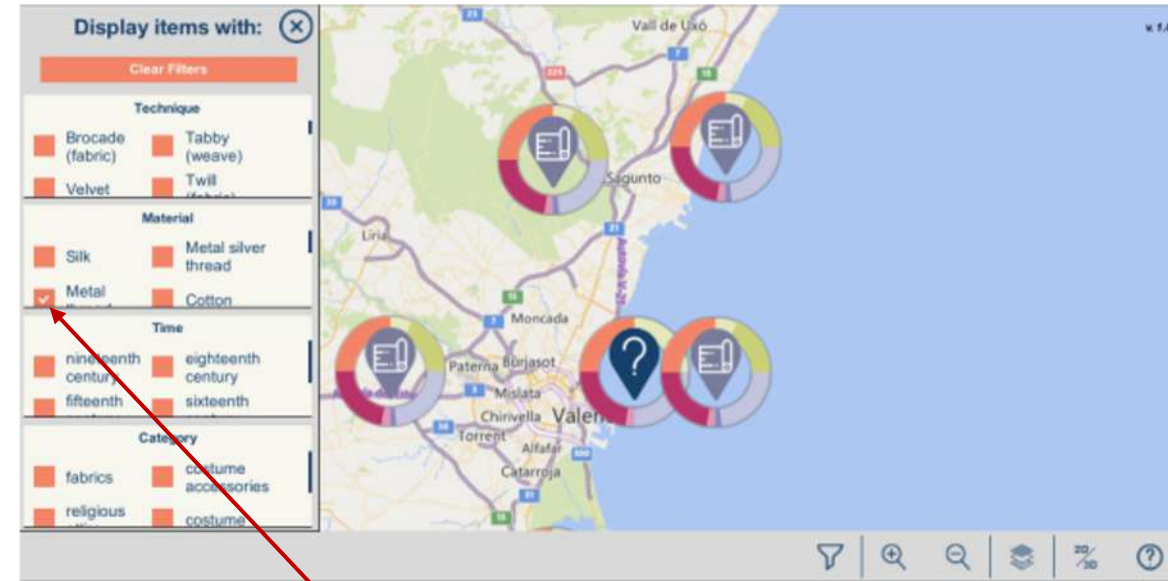


By selecting the check button, next to the property, there are linked/unlinked the objects with the same value

ADASilk Navigating the Spatio-Temporal Map



By clicking on the filter button, a window with all the values of the properties is displayed. The user can check a value in order to clear the objects with this value in the map.



By checking “metal” value in the material property, all objects that use metal are cleared.

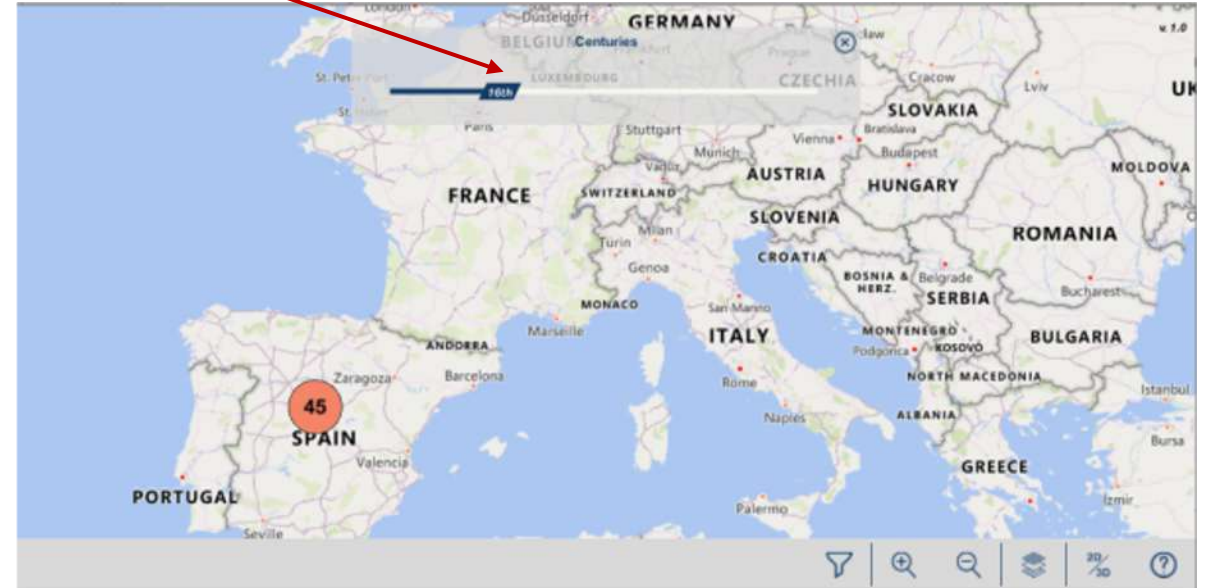
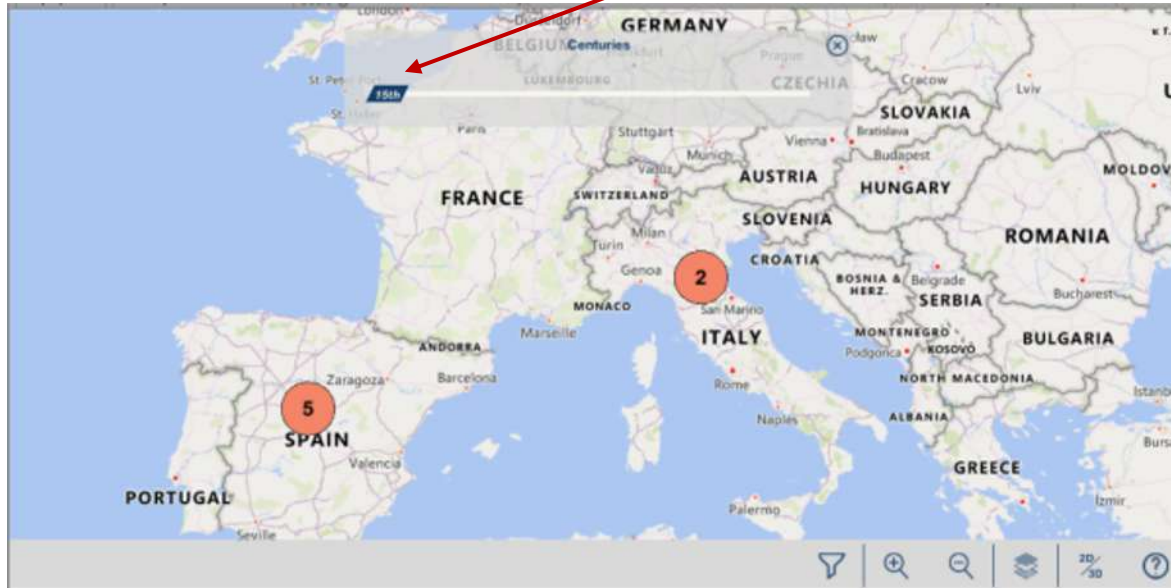
ADASilk navigation of the Spatio-Temporal Map



By clicking on the filter time button, a window with two ways of time filtering is displayed (Timeline and Time Layers).

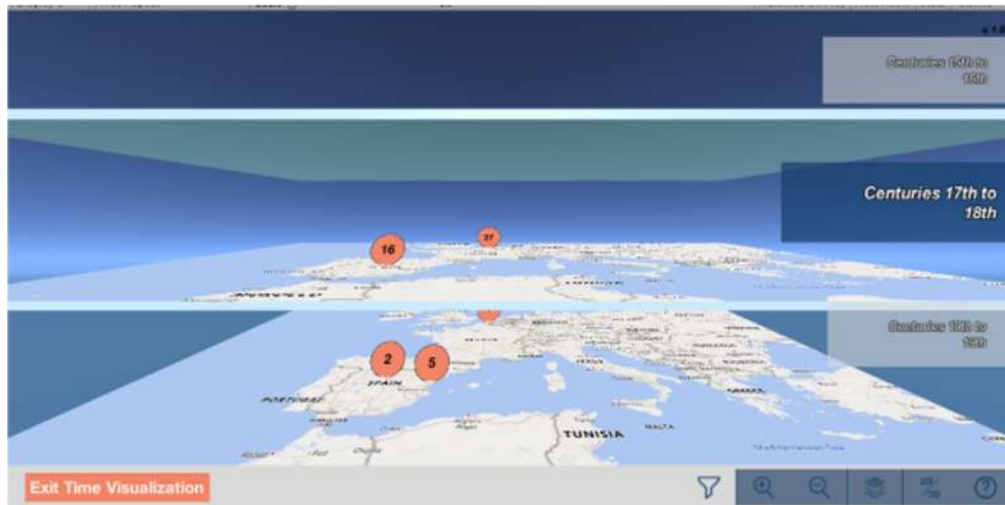
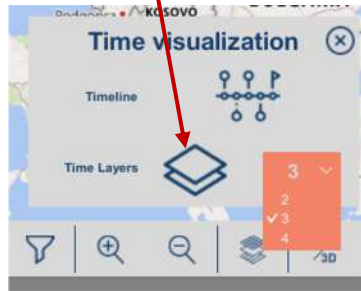
ADASilk navigation of the Spatio-Temporal Map

TimeLine: A slider is shown, where the user can visualise only the objects created in the selected century

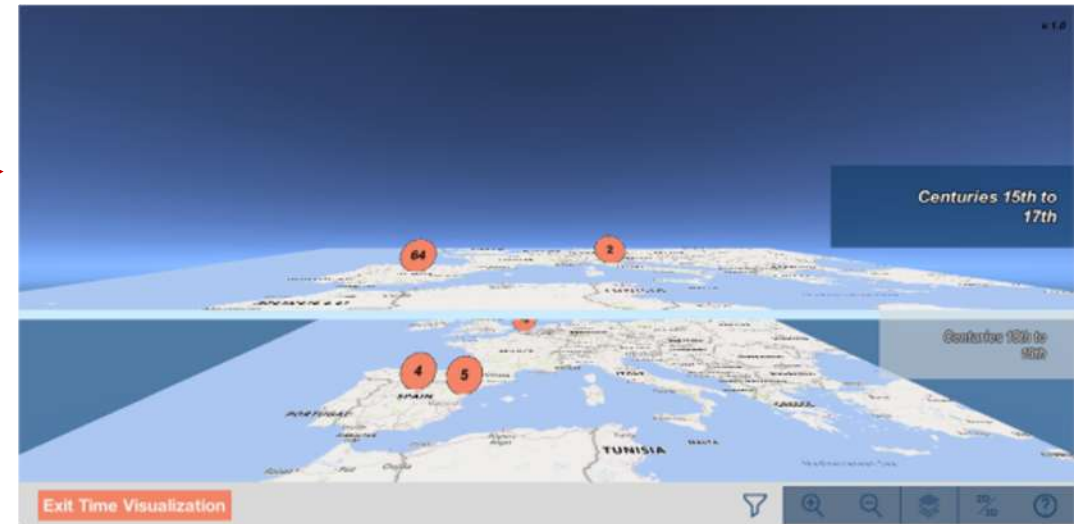


ADASilk navigation of the Spatio-Temporal Map

Time Layers: A menu appear in order to select the number of layers to display. Once this number is selected, by clicking on the layer button the time layer maps are displayed.



3 Layers



2 Layers